

# ANATECH

2023 info & rate sheet

## wide-area radio coverage

facility city provincial national

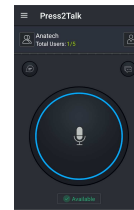


### service options costs per month per radio

model / hardware	wi-fi only	cellular no data*	with Anatech SIM & data
<i>lease / rent / contract</i>			
portable	\$22	\$22	\$34
mobile	\$26	\$26	\$38
<i>customer owned</i>			
portable	\$7	\$7	\$19
mobile	\$7	\$7	\$19
phone app	\$7	\$7	\$ -

- voice/call storage option, add \$5 per month per unit  
\* customer must supply own cellular sim card & data plan

Introducing our cellular data enabled radios. These radios utilize an existing cellular network to provide wide-area city, provincial, and national coverage.



There are also android & iphone app options for added flexibility and user integration.

### optional radio purchase pricing

T60 portable - \$375  
M50 mobile - \$475

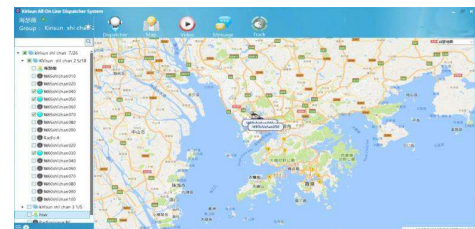
### optional dispatch software

caller ID                      GPS tracking & mapping  
group calling                  radio messaging  
individual calling              call playback

\$7 per month per login

### advanced dispatch options

voice/call storage, +\$5/month  
GPS playback, +\$5/month



**portables include**  
3600 mA/Hr battery  
high-gain antenna  
desktop charger  
belt clip  
IP65 water resistant

**service features**  
group call  
individual call  
caller ID  
last call playback  
GPS tracking  
radio (text) messaging  
lone worker alert  
emergency alert  
call playback history  
bluetooth audio  
works on cellular network  
and/or Wi-Fi network



mobile 6" x 1.75" x 3.25"



## advanced two-way radio & cellular in-building communications solutions

<https://anatechresources.net>

403-660-1000

[info@anatechresources.net](mailto:info@anatechresources.net)

providing technical services since 1993